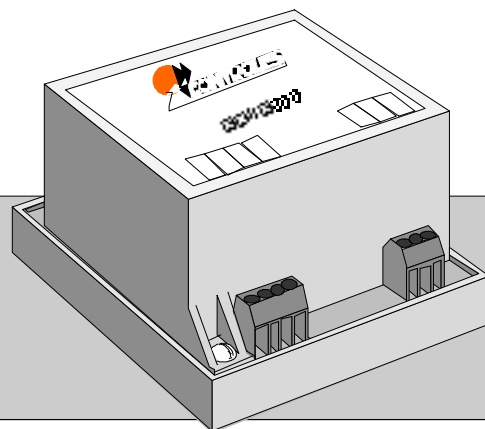


GONG GENERATOR

GONG800



DESCRIPTION

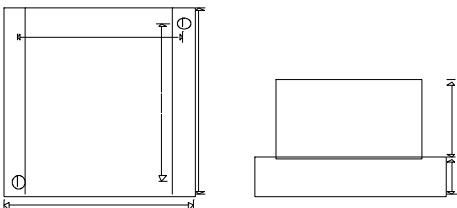
0V: reference voltage
P2: internal power supply +12 Vdc

INPUT SIGNAL:
CO

OUTPUT:
P1, P2: drives an 8 ohm loudspeaker

POWER REQUIREMENTS:
L1, L2: 220 VAC +/-10%, 47/63 Hz

DIMENSIONS (mm)



MADE IN URUGUAY

OPERATION

The output of the GONG800 Gong Generator drives an 8 ohm loudspeaker with a three tone audio signal of approximately two seconds length.

The input command to GONG800 may be obtained from an isolated contact or a 0/5 Vdc pulse. The pulse width of this input must be between 50 ms and 2 s. A longer command produces the repetition of the three tone output.

An internal potentiometer adjusts the audio output level.

In standby state CO input voltage is 0 Vdc (an internal resistor, 33 Kohm, 1/4 W, is wired from CO to 0V).

Two different ways may be used to generate the input signal:

1- an external 5 to 12 Vdc pulse applied between CO and 0V (positive at CO).

The pulse may also be generated with a NO isolated contact, momentarily shorting CO to P2.

2- a 2K2 1/4 W resistor is permanently wired from CO to P2. CO is forced to 0V voltage with an isolated NC contact (or an open collector transistor). The input pulse may be obtained momentarily opening the contact.

APPLICATIONS

Signalization for elevators (Landing Chime, Passing Chime), commercial and industrial applications.

OPTIONS

110 or 380 Vac, 47/63Hz input voltage.

CONTROLES S.A.

Av. Rivera 3314
11300 Montevideo
Uruguay

Tel.: +598 2 622 0651
Fax: +598 2 622 2048
info@controles.com
www.controles.com