

T3FPASCM1: POWER TRANSFORMER AND POWER SUPPLY CARD

GENERAL CHARACTERISTICS

LINE INPUT

220 Vac +/-10%, 50/60Hz: delta connection, factory default.

Connect the power lines to Lc1, Lc2, Lc3 terminals in the card. Lc1f, Lc2f, Lc3f terminals are this lines with 3A series fuse each, and are wired to the terminal block located at the side of the transformer.

380 Vac +/-10%, 50/60Hz: star connection.

Remove the factory wiring Lc1f, Lc2f, Lc3f between the card and the terminal block and the Lc1f, Lc2f, Lc3f jumpers at the terminal block. Remove the top three 3A card fuses. Connect the input 380Vac line to L1, L2, L3 terminals at the terminal block. Connect the neutral line to the three N terminals. External 2A fuses or line switch are needed.

TRANSFORMER

Primary: 1a, 1b, 2a, 2b, 3a, 3b: 3*220 Vac, 500VA
 Secondaries: FUSE
 1- x1, y1: 220 Vac 2*2A
 2- x2, y2: 220 Vac 2*2A
 3- a1, a2, a3: 105 Vac, star wired 3*2A
 4- ca1, ca2, M (center tap), D2, 2*21 Vac 2*1A
 5- e, M: 10 Vca, 2*3A

POWER SUPPLY OUTPUT

1- 110V(+), MP(-): 110 Vdc 3A (with LED)
 (six rectifiers arrange from a1, a2, a3)
 2- +24V(+), MA(-): 24 Vdc 1 A (with LED)
 (two rectifiers from ca1,ca2):

ARC SUPPRESSORS:

4 series circuits (47 ohm 5W, .22 uF 630 Vdc):
 (S1a, S1b) (S2a, S2b) (S3a, S3b) (S4a, S4b)
 1 RCD circuit (see diagram): F, MP

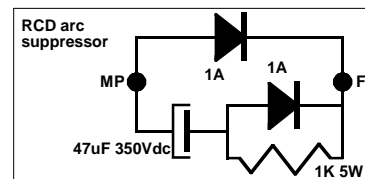
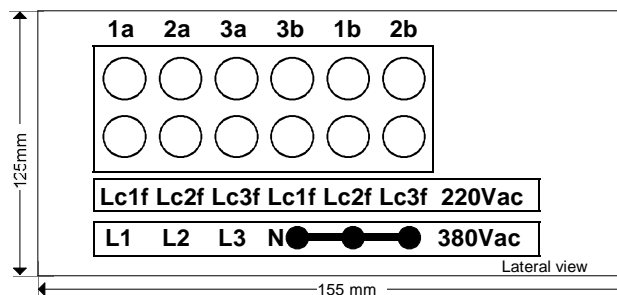
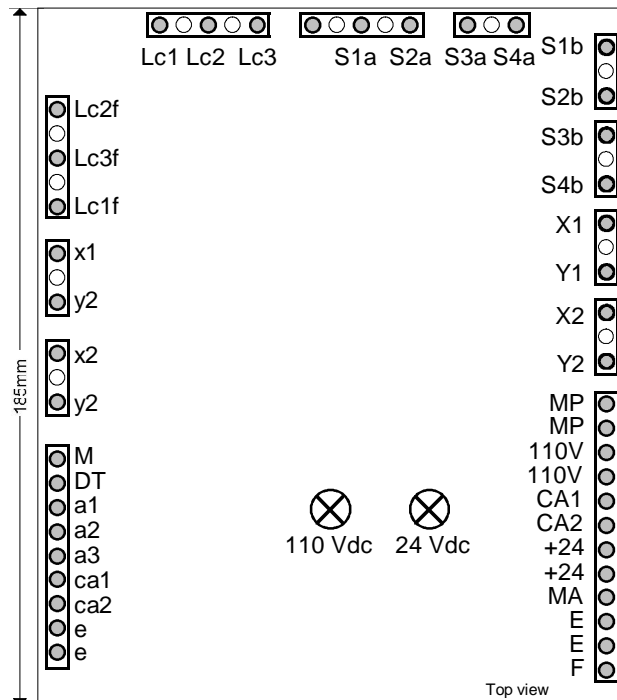
GROUND AND REFERENCES WIRING

A) Protective grounding must be wired to DT terminal.
 B) The reference (-) wire of the 110 Vdc supply (used to power brake, retracting cam, etc.) is wired from MP terminals.

C) The reference wire (-) of the +24 Vdc supply (used to power the electronics: controller, position sensors, indicators, etc.) is wired from MA terminal.

This three circuits have an internal common point in the card. Separate wires must be used for the external wiring A), B) and C). Any other connection between them must be excluded.

MADE IN URUGUAY



Weight: 9.1 Kgr

CONTROLES S.A.
 AV. Rivera 3314
 11300 Montevideo
 URUGUAY

Tel.: +598 2 622 0651
 Fax :+598 2 622 2048
 info@controles.com
 www.controles.com